

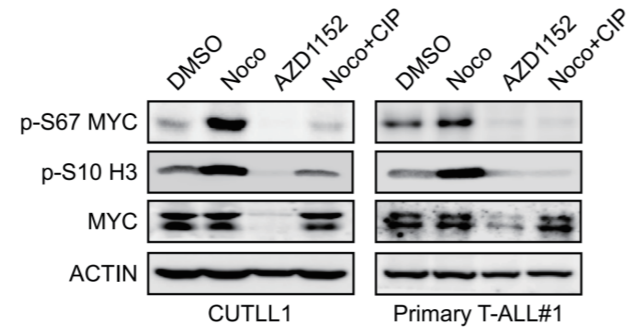
## Featured Case Studies

### Cancer Cell

**Direct Phosphorylation and Stabilization of MYC by Aurora B Kinase Promote T-cell Leukemogenesis**

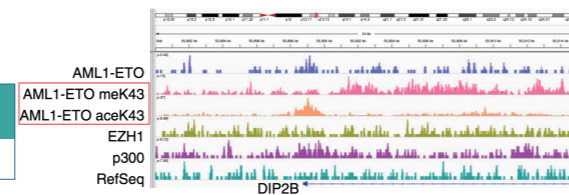
PMID	Impact Factor	Journal	Application	Custom Antibody
32049046	38.585	Cancer cell	WB	MYC S67p

Article



ARTICLE  
<https://doi.org/10.1038/s41588-019-0560-8> OPEN  
 Protein lysine 43 methylation by EZH1 promotes AML1-ETO transcriptional repression in leukemia

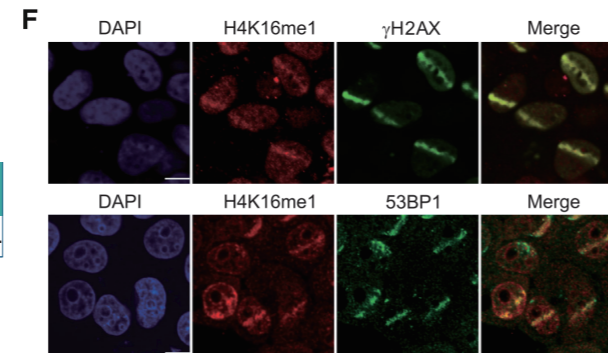
PMID	Impact Factor	Journal	Application	Custom Antibody
31612207	17.7	Nature Communications	WB/ChIP	K43me-AML1



### NAR Breakthrough Article

**GLP-catalyzed H4K16me1 promotes 53BP1 recruitment to permit DNA damage repair and cell survival**

PMID	Impact Factor	Journal	Application	Custom Antibody
31612207	19.16	Nucleic Acids Research	WB/IF/ChIP	H4K16me1

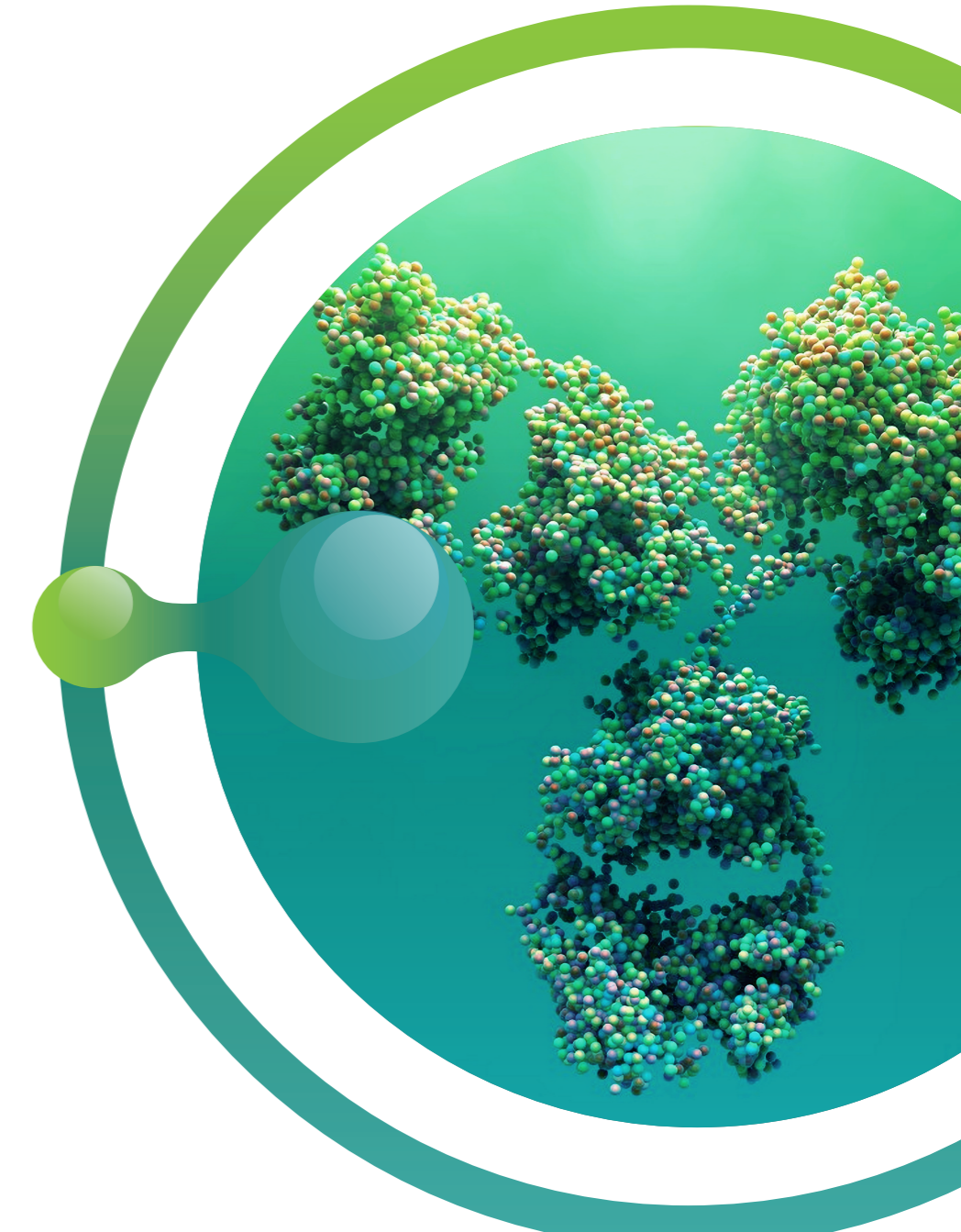
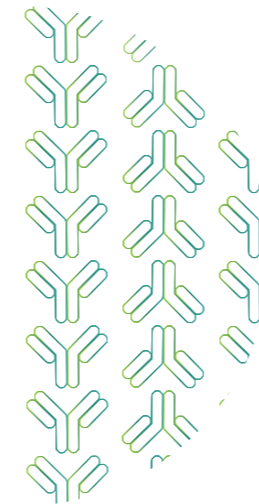


## About Us

Established in 2010, PTM BIO has emerged as a pioneering force in the fields of epigenetics and proteomics. Led by distinguished scientists, our mission is to develop and provide innovative research products and services that revolutionize our comprehension, diagnosis, and treatment of human diseases. Our integrated platform, encompassing proprietary PTM reagents, sophisticated mass spectrometry expertise, and advanced bioinformatics tools, has been profoundly benefiting biomedical and pharmaceutical research, as demonstrated by continuous high-profile publications and long-term collaborative relationship with top tier drug discovery organizations. We are well positioned to apply state-of-the-art proteomics strategies to improve therapy selection for patients, and to discover a brave new world of medical possibilities.

### PTM BIO

www.ptmbio.com  
 Tel: +1 312-802-6843  
 Email: info@ptmbio.com



# Custom Antibody Services

## Empowering Scientific Discoveries

## Service Features

### The Pioneer in Novel Modifications

Your Premier Destination for Custom PTM Antibodies

We specialize in creating custom antibodies for a wide range of novel acylation modifications, including lactylation, crotonylation, succinylation, and more. PTMab boasts the world's most extensive collection of PTM antibodies, featuring over 30 different modification types.

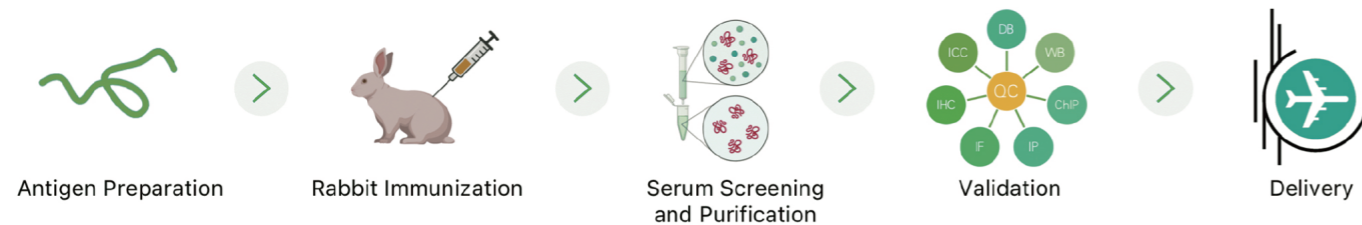
### An Impact Factor Amplifier

Achieve High-Impact Publications with Our Exceptional Success Rate

Our custom antibodies have achieved remarkable success in development, with a staggering 96% success rate over the past four years, covering over 28 different species. The average impact factor of collaborative articles reached an impressive 10+ in 2022.

## Custom Antibody Solution 1

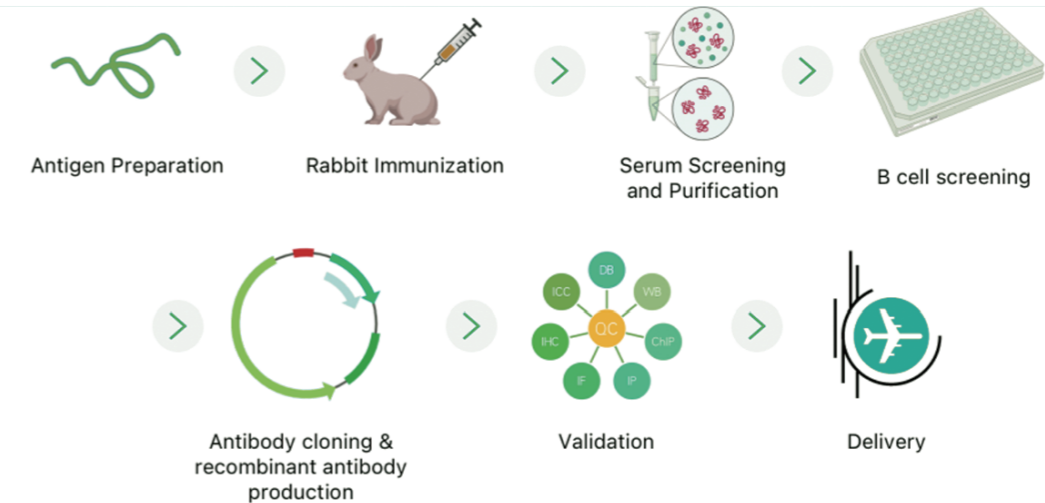
### Rabbit Polyclonal Antibody Generation (Unmodified & PTM-Specific)



Phases	Package A Unmodified Antibody	Package B PTM- Specific Antibody	Deliverables
Antigen Preparation (2~3 weeks)	2 Antigenic polypeptides QC by in-house mass spectrometry facility	2 Antigenic polypeptides 1 Unmodified control polypeptide QC by in-house mass spectrometry facility	1 mg each peptide
Immunization (8~11 weeks)	4 Rabbits 1 primary injection + 5 booster injections	6 Rabbits 1 primary injection + 5 booster injections	/
Serum Screening & Purification (1~2 weeks)	Serum primary screening by ELISA and WB. Affinity purification against Protein A and antigen.	Serum primary screening by ELISA and WB. Affinity purification against Protein A and antigen, followed by depletion in an unmodified polypeptide affinity column	/
Validation (1~2 weeks)	QC Standards: 1. Minimum antibody titer of 1:50,000 as determined by ELISA; 2. Test one of the following applications: WB, ICC, or IHC.	QC Standards: 1. Minimum antibody titer of 1:50,000 as determined by ELISA; 2. Dot Blot: Recognition of the modified antigen polypeptide at a minimum of 20 ng. The antibody should demonstrate at least 10-fold higher selectivity for the modified peptide over the unmodified peptide. 3. Endogenous target protein detected by WB.	2 mg antibody and development report.

## Custom Antibody Solution 2

### Recombinant Rabbit Monoclonal Antibody Generation (Unmodified & PTM-Specific)



Phases	Package A Unmodified Antibody	Package B PTM- Specific Antibody	Deliverables
Antigen Preparation (2~3 weeks)	2 Antigenic polypeptides QC by in-house mass spectrometry facility	2 Antigenic polypeptides 1 Unmodified control polypeptide QC by in-house mass spectrometry facility	1 mg each peptide
Immunization (8~11 weeks)	4 Rabbits 1 primary injection + 5 booster injections	6 Rabbits 1 primary injection + 5 booster injections	/
Serum Screening & Purification (1~2 weeks)	Serum primary screening by ELISA and WB. Affinity purification against Protein A and antigen	Serum primary screening by ELISA and WB. Affinity purification against Protein A and antigen, followed by depletion in an unmodified polypeptide affinity column	/
B Cell Panning & Screening (2 weeks)	B cell panning and ELISA screening for positive clones	B cell panning and ELISA screening for positive clones	/
Antibody Cloning & Recombinant Antibody Production (7~8 weeks)	Select the best positive clone for sequencing, IgG cloning and recombinant antibody production	Select the best positive clone for sequencing, IgG cloning and recombinant antibody production	/
Validation (1~2 weeks)	QC Standards: 1. Minimum antibody titer of 1:50,000 as determined by ELISA; 2. Endogenous target protein detected by WB.	QC Standards: 1. Minimum antibody titer of 1:50,000 as determined by ELISA; 2. Dot Blot: Recognition of the modified antigen polypeptide at a minimum of 20 ng. The antibody should demonstrate at least 10-fold higher selectivity for the modified peptide over the unmodified peptide. 3. Endogenous target protein detected by WB.	2 mg antibody and development report